

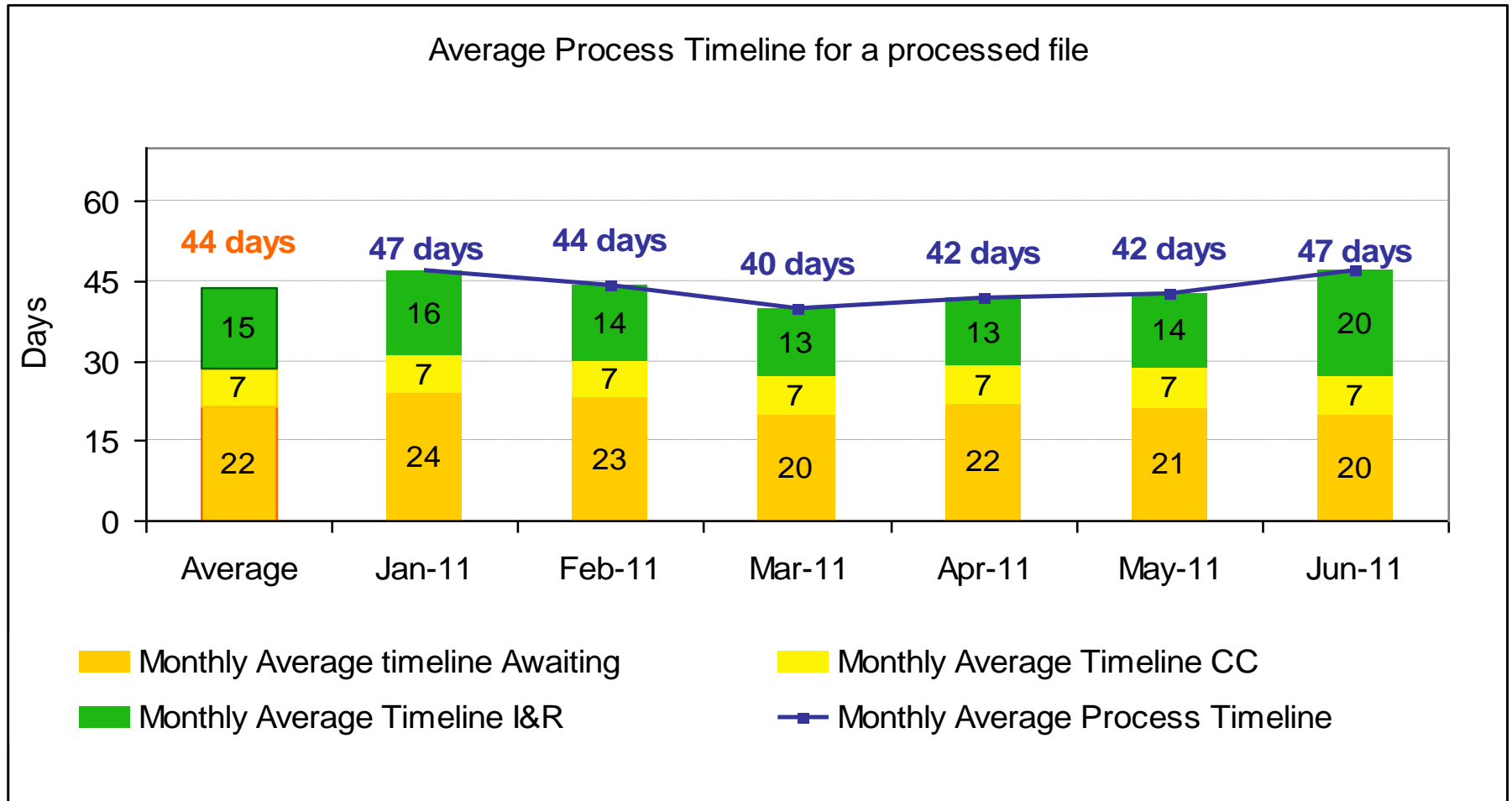
2011-2012
Completeness Check Timelines
for Request for Issuance

Executive Summary

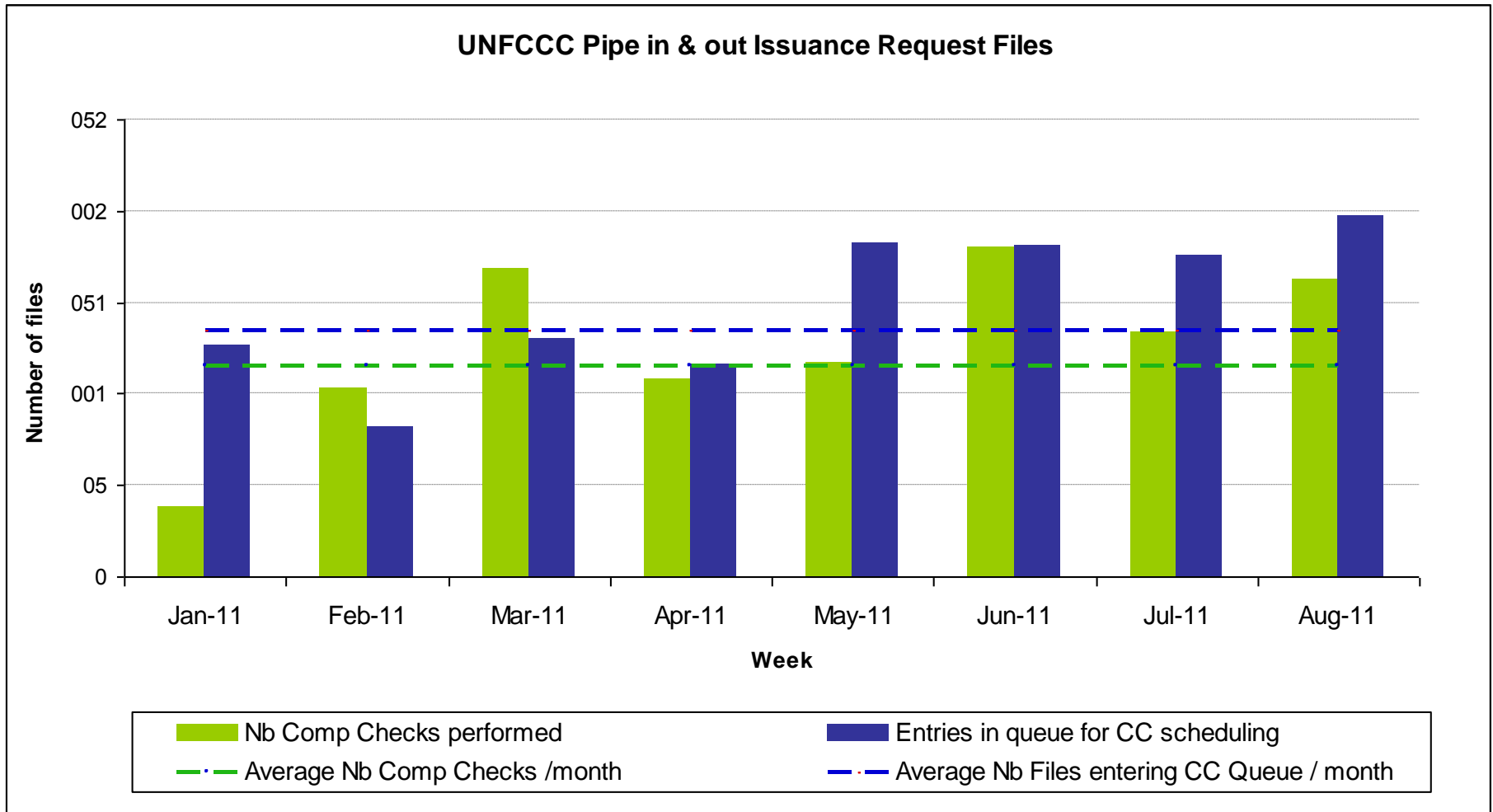
- Although during the first semester of 2011 the average timeline was close to Secretariat's target (~45 days), file entrances are higher than the number of processed files. Hence backlog has substantially increased.
- PD Forum members request more visibility on the processing rates of files to better forecast accordingly and avoid shift of issued volumes due to unexpected increase in timelines.
- External consultants recruitment should be pushed one step further to ensure timelines remain sustainable considering current files inflow and foreseen increase.

CC timelines - current status

The average timeline of a processed file is 44 days below Secretariat target limit (~45days). However, some files in June and July have taken more than 50 days to be processed

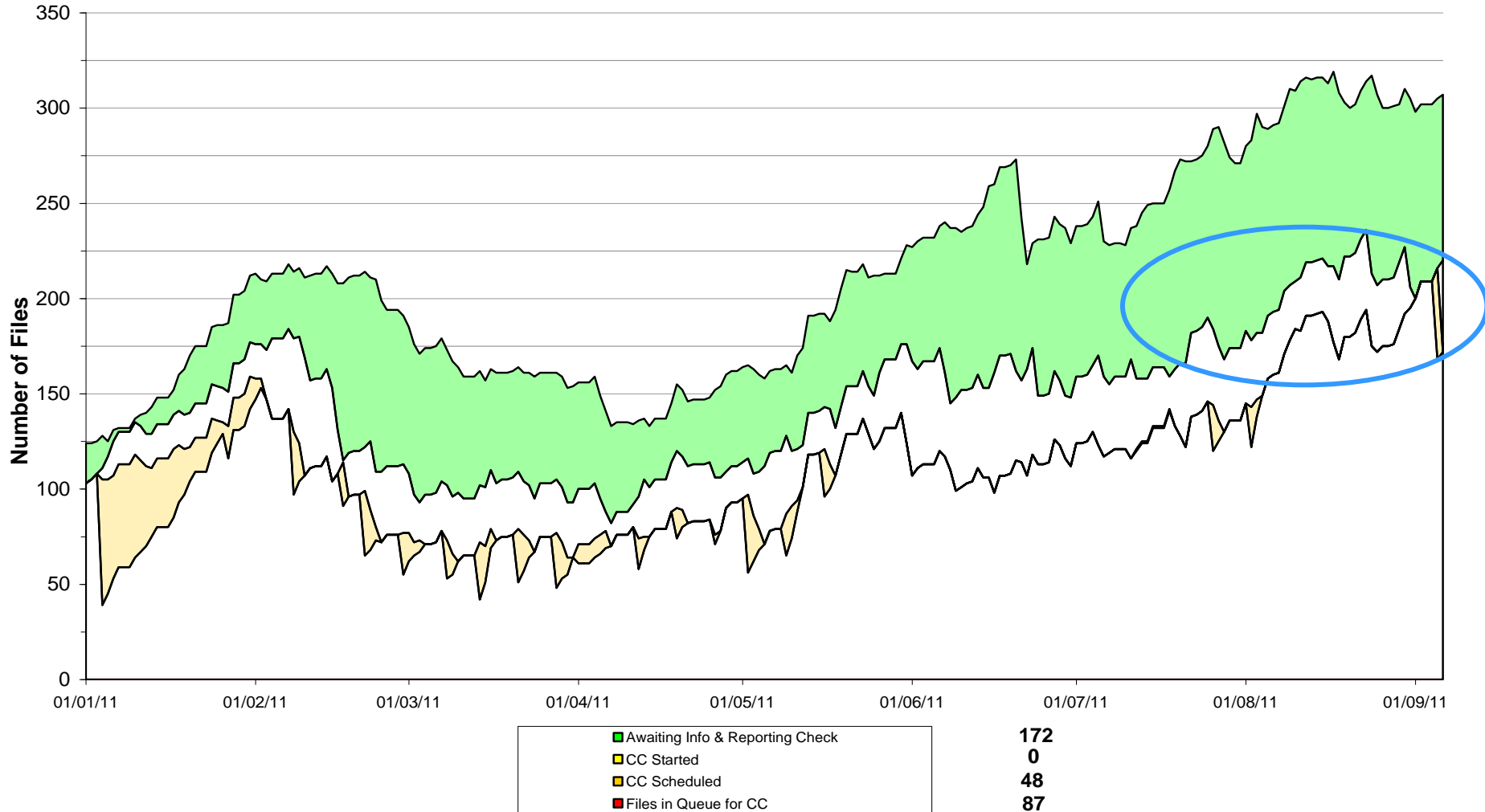


During July and August the nb of files entering the pipe > nb of files processed → the nb of files awaiting CC has reached 2011's maximum



There is no scheduling -> no visibility on timelines

UNFCCC Completeness Check pipe



2012 Forecast

Assumptions

- Number of file entries in 2012 (see following slide)
 - Secretariat (UNFCCC): MAP 2011
 - PD Forum: survey completed by members and extrapolation to nb of projects registered
- Resubmissions
 - Projects that have failed CC in 2011 = 20%
 - In 2012 we expect an improvement → 15%
- Files processed
 - 2011 Average: 35 files/week
 - Secretariat could try to adapt the processing rate to the number of files entering the pipe with the support of external consultants
- CC timelines
 - Max. 30 days

Actual & Forecasted 2012 entries : Data from PD Forum

Real Submissions	2010	2011 YTD (W35)
Monthly average	73	104
Weekly average	18	26
Resubmissions	14%	20%
Week (w/resubmissions)	21	34
Processing Rate	21	29
Timeline (weeks)	13	6

Forecast PD Forum		2011	2012	2013	2014
Sample of PD Forum reg projects:	376				
Avg monthly submission of MRs:		26	35	35	35
Percent of MR submissions per month:		7%	9%	9%	9%
No. of reg CDM projects (as of 27 Apr):	3030				
Avg monthly submission of MRs: (based on sample)					
	Monthly average	210	285	279	283
	Weekly average	53	71	70	71
	Resubmissions	20%	15%	15%	15%
	Week (w/resubmissions)	63	82	80	81

- Sample based on the planned verifications of PD Forum members for 2012 extrapolated to all registered CDM projects

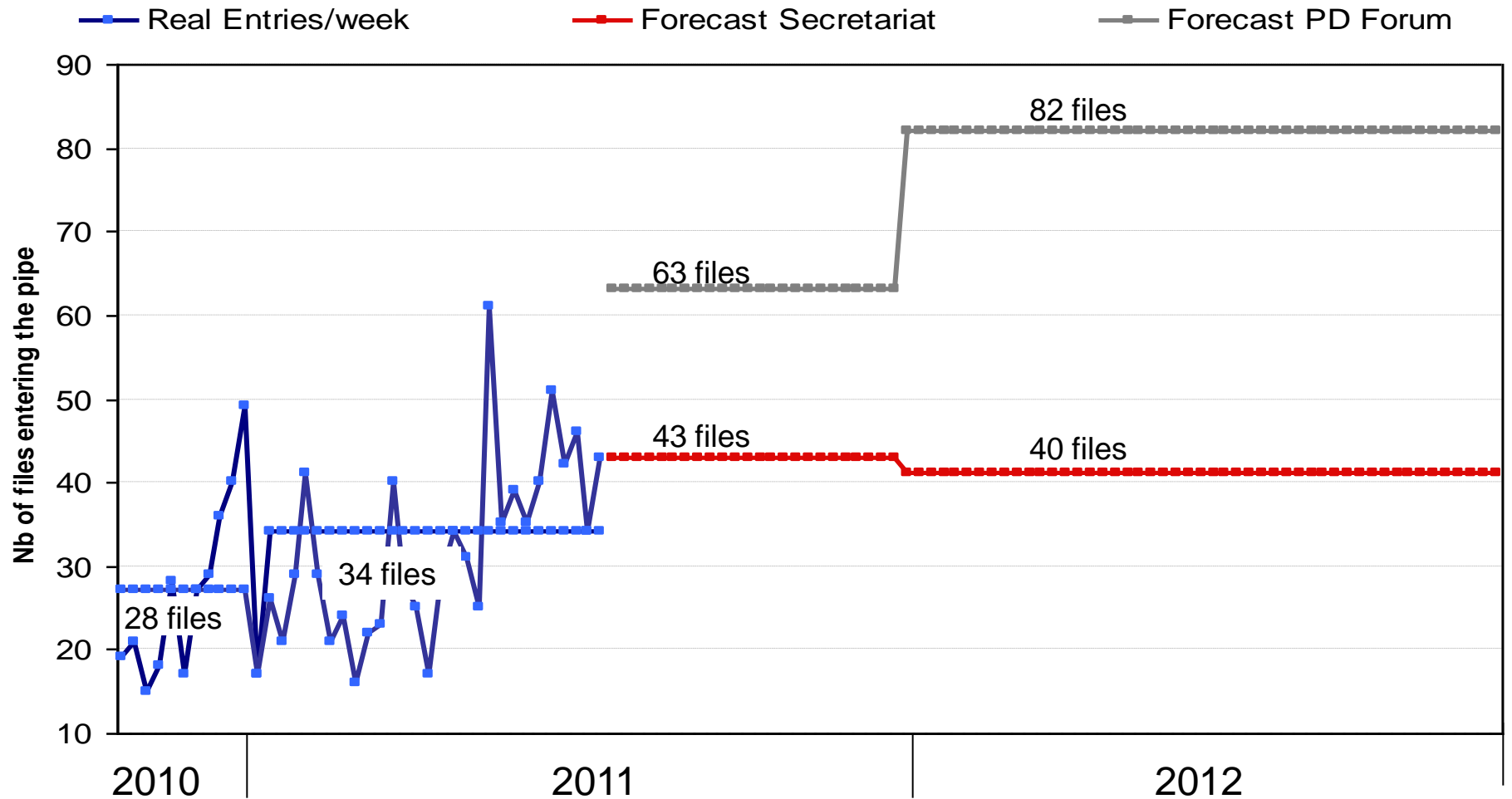
Actual & Forecasted 2012 entries : Data from Secretariat

Real Submissions	2010	2011 YTD (W35)
Monthly average	73	104
Weekly average	18	26
Resubmissions	14%	20%
Week (w/resubmissions)	21	34
Processing Rate	21	29
Timeline (weeks)	13	6

Forecast Secretariat	MAP 2011 (EB59 - Feb 2011)	2011	2012	2013	2014
		1700	1700	1700	1700
	Monthly average	142	142	142	142
	Weekly average	35	35	35	35
	Resubmissions	20%	15%	15%	15%
	Week (w/resubmissions)	43	41	41	41

- 2011 average is in line with current entries
- For 2012, it is expected that the number of files entering the pipe will increase. Secretariat's forecast seems quite optimistic considering current inflow

Real/Forecasted 2012 entries



Timelines per Scenario

Assumptions:

Entries: Two scenarios, based on UNFCCC Secretariat and PD Forum data

Processing rate will depend on Secretariat's resources:

- No future recruitments are foreseen for 2012
- Secretariat will again require the support of external consultants to balance the files in the pipe

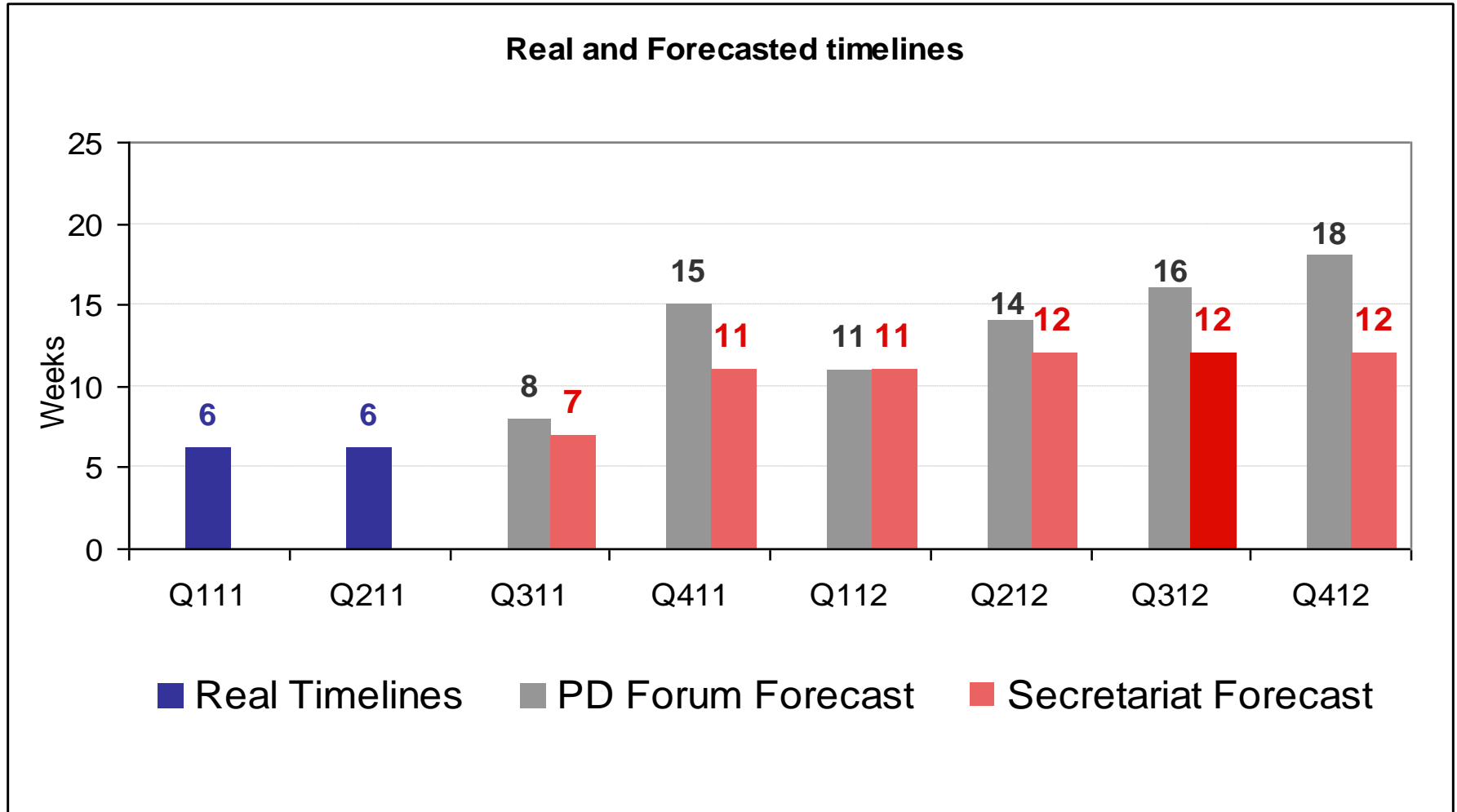
Forecast PD Forum

	Weeks	In	Out	Queue	Wks	Days	Aw	CC
Q111	27	27	-24	159	6	45	32	13
Q211	36	36	-30	230	6	40	25	15
Q311	48	48	-34	420	8	54	29	30
Q411	63	63	-40	719	15	102	72	30
Q112	82	82	-70	875	11	80	50	30
Q212	82	82	-70	1031	14	96	66	30
Q312	82	82	-70	1187	16	112	82	30
Q412	82	82	-70	1271	18	127	97	30

Forecast Secretariat

	Week	In	Out	Queue	Wks	Days	Aw	CC
Q111	27	27	-24	159	6	45	32	13
Q211	36	36	-30	230	6	40	25	15
Q311	42	42	-34	340	7	51	27	24
Q411	43	43	-35	444	11	79	49	30
Q112	41	41	-40	457	11	79	49	30
Q212	41	41	-40	470	12	81	51	30
Q312	41	41	-40	483	12	83	53	30
Q412	41	41	-40	490	12	86	56	30

Timelines per Scenario



➤ Depending on the assumptions → timelines skyrocket to as many as 18 weeks!

Conclusions

- The number of issuance requests will increase substantially, the current processing rate is not enough to treat the files entering the pipe
- Secretariat should ensure sustainable project assessment strategies:
 - Scheduling files will give more visibility on timelines
 - Risk based approach should be considered as an option
 - External consultants recruitment should be pushed one step further to ensure timelines remain sustainable, no higher than levels seen through 2011 1st semester